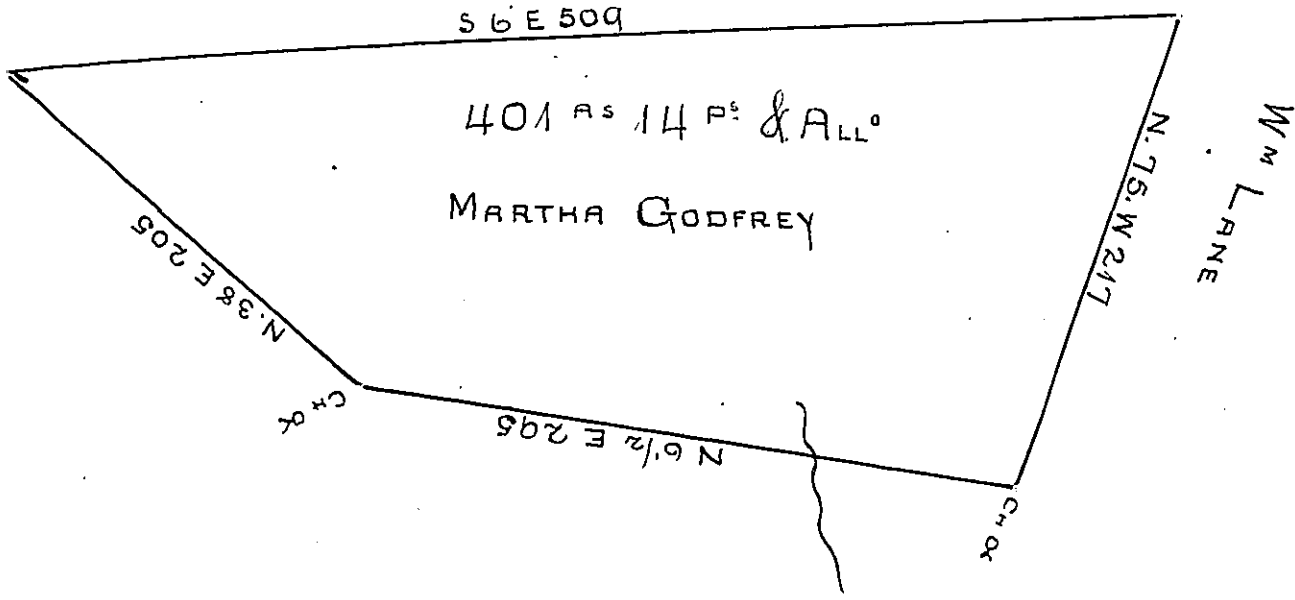


Jo^s: KELSO
C-97-282



Situated in Ait Township Bedford County adjoining
 land of William Lane containing 401^{as} 14^{ps} & Allowance
 of Six Perches for roads &c In pursuance of a Warrant
 granted to Martha Godfrey for 400 Acres dated 18th
 March 1794 Surveyed 14th August 1794
 George Woods Jun^r D.S.
 To Daniel Brodhead Esq^r S. G.

IN TESTIMONY that the above is a copy of the original remaining on file in the
 Department of Internal Affairs of Pennsylvania, made con-
 formably to an Act of Assembly approved the 16th day of
 February, 1833, I have hereunto set my Hand and caused
 the Seal of said Department to be affixed at Harrisburg, this
 Twenty Sixth day of April 1877

Wm M Caudle
 Secretary of Internal Affairs